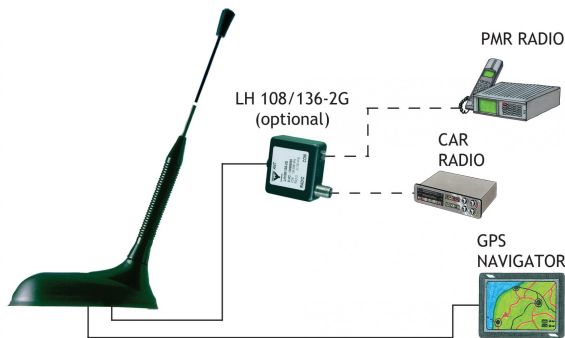


GPS-C 2R/FM/...

GPS Antenna with a $\frac{1}{4} \lambda$ Whip with Shock Spring for the 160 MHz and FM Bands

DESCRIPTION

- External antenna whip mounted on the GPS-Combi mount.
 - Black-chromed, conical stainless steel whip.
 - Easily removable whip for car wash.
- GPS-antenna for fixed installations.
 - Full hemispherical coverage.
 - Built-in high gain, low noise amplifier.
 - Right-Hand Circularly Polarized antenna (RHCP).
 - 5 V supply voltage (3 V respectively 12 V available on request).
 - DC supply via RF-connector.
 - Sturdy, general-purpose $\frac{1}{4} \lambda$ antenna in professional quality.



SPECIFICATIONS FOR WHIP ELECTRICAL

ELECTRICAL	
MODEL	GPS-C 2R/FM/...
ANTENNA TYPE	$\frac{1}{4} \lambda$ mobile antenna
FREQUENCY	Tunable by cutting within: 144 – 175 MHz also receives FM band (88 – 108 MHz)
IMPEDANCE	Nom. 50 Ω
POLARIZATION	Vertical
GAIN	Approx. 0 dB (acc. to EIA RS-329-1)
BANDWIDTH	2 m: ≥ 20 MHz @ SWR ≤ 2.0
SWR	≤ 1.3 @ f.res.
MAX. POWER	25 W
MECHANICAL	
MATERIALS	Whip: Black-chromed, conical stainless steel Black-chromed brass Spring: Black-chromed, stainless steel
COLOUR	Black
HEIGHT	Approx. 450 mm
WEIGHT	Approx. 50 g
MOUNTING	On the GPS-Combi mount

ORDERING DESIGNATIONS

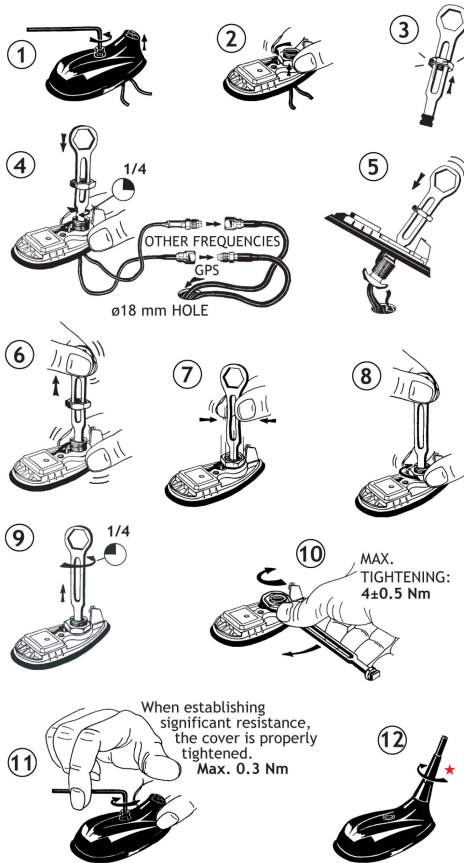
TYPE	PRODUCT NO.
GPS-C 2R/FM/...	132000062
LH 108/136-2G (optional)	200000762

Can also be supplied factory-cut for the required frequency (between 144 - 175 MHz).

SPECIFICATIONS FOR GPS-COMBI MOUNT

ELECTRICAL GENERAL SPECIFICATIONS	
MODEL	GPS-COMBI MOUNT
ANTENNA TYPE	Active patch antenna
FREQUENCY	1575 MHz
IMPEDANCE	Nom. 50 Ω
POLARIZATION	Circular right-hand
COVERAGE	Hemispherical
GAIN	28 dBic in axial direction (typ.)
CROSS-POLARIZATION ATT.	> 10 dB (typ.)
SELECTIVITY	> 45 dB down @ ± 45 MHz
BUILT-IN AMPLIFIER	
GAIN	> 30 dB (typ.)
NOISE FIGURE	< 1 dB (typ.)
P 1dB	Approx. +7 dBm
SWR (output)	≤ 2.0
SUPPLY VOLTAGE	5 ± 0.5 VDC (3 V resp. 12 V on request)
CURRENT CONSUMPTION	Approx. 25 mA
MECHANICAL (ONLY FOR THE GPS-PART)	
MATERIALS	Cu-nite brass Stainless steel Reinforced thermoplastic
ANTENNA COLOUR	Black
TEMP. RANGE	-35° C \rightarrow $+75^{\circ}$ C
CONNECTOR	FME (male for GPS) + FME (female for mobile antenna)
RECOMMENDED INSTALL. TORQUE	4 ± 0.5 Nm
DIMENSIONS (H x L)	Approx. 30 x 89 mm
ROOF THICKNESS	Max. 2.5 mm
WEIGHT	Approx. 114 g
MOUNTING	$\varnothing 18.0$ mm dia. hole for roof thickness up to 2.0 mm $\varnothing 18.5$ mm dia. hole for roof thickness 2.0 - 2.5 mm Tools for mounting included

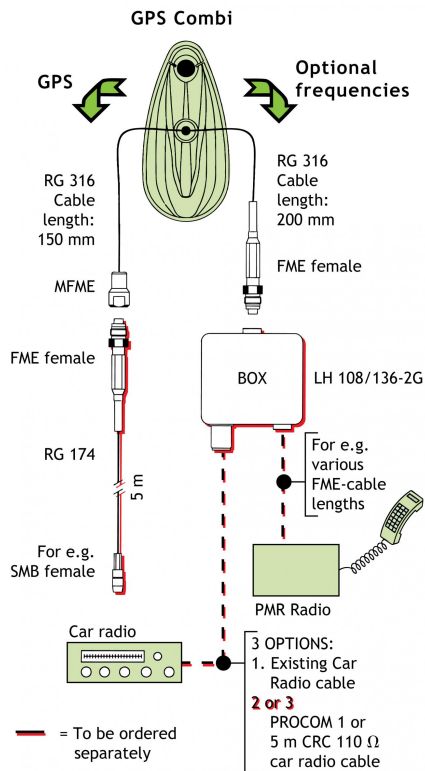
MOUNTING INSTRUCTIONS



★ The whip should always be dismantled during car wash.

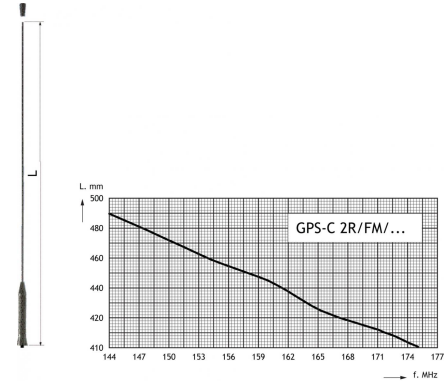
Do not use sealer on rubber gasket or other places.

CABLE MOUNTING

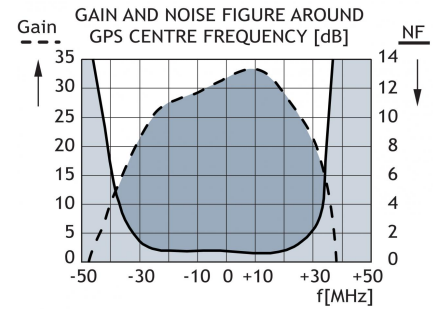
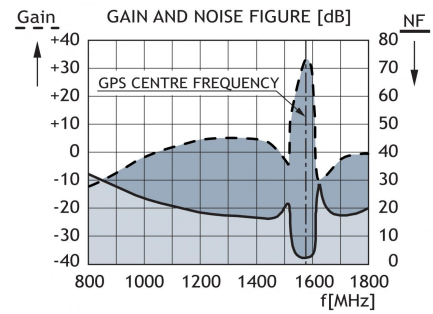


TUNING

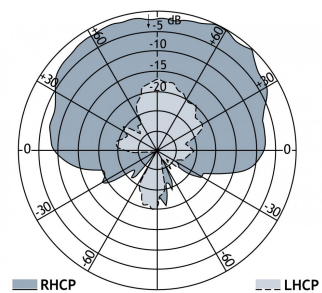
The antenna should always be tuned using an SWR-meter. The cutting diagram below serves as a guide for this procedure.



TYPICAL RESPONSE CURVES



VERTICAL RADIATION PATTERN



CE

PROCOM A/S reserve the right to amend specifications without prior notice.
22/08/13

